



**MacroHealth**

Optimize

# MiX

## MACROHEALTH iNTELLIGENT EXCHANGE™

---

The MacroHealth intelligent Exchange (MiX) is a first-of-its-kind SaaS platform that leverages data science and industry standard interoperability to create a secure, cloud-based Intelligent Health Market™- a transparent digital healthcare ecosystem where all players are able to easily leverage key data to make informed business decisions and collaborate with best-in-class partners, enabling them to win.

# Optimize

Healthcare payers seeking to optimize their provider networks to expand member access to the highest performing providers nationally and locally utilize MacroHealth's Network Optimization Analytics on the MiX platform. Using our proprietary data ingestion processes, multi-variate algorithms and advanced analytics, payers garner a deep understanding of their provider performance and can design a customized network solution for line of business, group or member populations.



MacroHealth's Network Optimization Analytics enables you to create a custom, curated network solution to help you lower healthcare costs, achieve better margins and foster membership growth.

## *Leverage Network Optimization Analytics to:*

- ■ Evaluate network design to ensure that your organization has access to the highest performing, most cost-efficient providers in the market.
- ■ Evaluate various medical spend categories and address low performing areas by introducing stronger specialty networks, such as Transplant Networks, Cardiac, Maternity etc.
- ■ Provide broader, cost-efficient access to in-network providers for employees or members as they travel nationally or live remotely.
- ■ Reduce Out of Network spend by expanding access to a broader network or leverage various provider reimbursement approaches that achieve your business objectives.



## How It Works:

*Historical Payer claims data is run through our machine learning model to identify the best network strategies for optimal savings >*

**1. INGEST** > Historical paid claims are processed, validated, and repriced to ensure that personal health information (PHI), personal identifiable information (PII) and sensitive competitive information are either de-identified or removed.

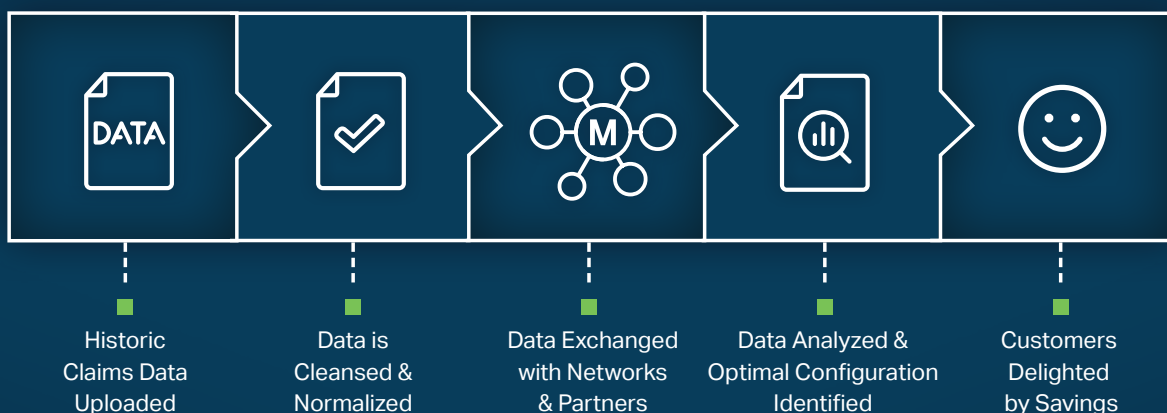
**2. REPRICE** > Using our re-pricing algorithms, database and third-party connections, your claims are repriced through the MiX platform across the universe of network partners that are part of the MiX ecosystem.

**3. OPTIMIZE** > Our machine learning and advanced analytics algorithms will use the repriced claims data from all of the network partners to develop a universe of options for you

to evaluate. Apply various constraints or filters that are specific to your operational or change management requirements and Optimize will then present the optimal solution recommendation, demonstrating the resulting financial outcomes.

## 4. OPERATIONALIZE

> Network Optimization Analytics goes beyond analytical insights to identify an optimized solution. The data and analysis in the MacroHealth data factory is connected to our interoperability and connectivity solution, Connect, to help you realize the savings identified in the Network Optimization Analysis.



# Powerful, Flexible, Innovative Tools.

## Network Optimization Analysis



### Recommended Configuration

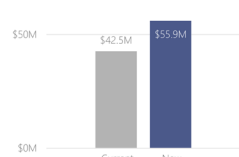
Configuration	Billed \$	Discount \$	Gross Savings %	Fee \$	Net Savings \$	Net Savings %
Current	\$130,995,718	\$46,711,956	35.7%	\$4,236,534	\$42,475,422	32.4%
New						
In-Network	\$115,940,811	\$61,883,274	53.4%	\$10,365,448	\$51,517,826	44.4%
Out-of-Network	\$15,054,907	\$5,269,218	35.0%	\$882,594	\$4,386,624	29.1%
Total	\$130,995,718	\$67,152,492	51.3%	\$11,248,042	\$55,904,450	42.7%

### Incremental Annual Net Savings

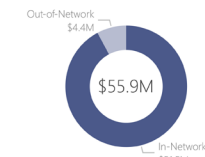
**\$13,429,028**

This represents a 15.2% additional reduction of total allowed amount compared to current configuration.

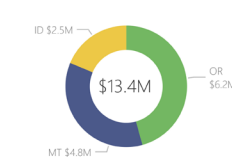
Total Net Savings by Configuration



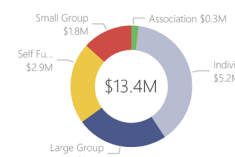
Total Net Savings by Partner



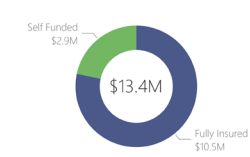
Incremental Net Savings by Group Domicile



Incremental Net Savings by LOB Group



Incremental Net Savings by Funding Type



Network Status



Annualized Incremental Net Savings by Optimization Solutions Name



Service Area

Filters

Group Domicile
All

Member Type
All

Line of Business
All

Optimization Solutions Name
Option A

## FLEXIBLE ANALYSIS

The intuitive user interface of the MiX platform makes it easy to optimize network solutions broadly or granularly, such as by region or group plan, to meet your needs. Generate all potential combinations and filter out the ones that don't meet your business requirements to view and compare potential savings for each combination.

data and vendor partner data) to optimize your solutions to achieve cost and quality objectives. With an ever-growing ecosystem of healthcare solutions partners on the MiX platform, you can rest assured you are selecting from the widest range of networks available and making data-driven decisions that will positively impact your member population.

## LEVERAGE ADVANCED ANALYTICS & DATA SCIENCE TO GUIDE BUSINESS DECISIONS

The optimization process is fully automated on the MiX platform, eliminating the need for manual data processing and comparisons across spreadsheets.

Systematically analyze and benchmark against data from multiple sources (including your own data, third party

## CUSTOMIZE OPTIMIZATION CRITERIA TO MEET YOUR BUSINESS NEEDS

Granular filtering and logic capabilities ensure you are not missing out on any potential savings and are selecting a new solution that will best meet your unique requirements.

■ Add Constraints and Boundaries

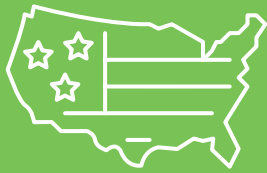
■ Focus on a specific region

■ Focus on a specific line of business

## OPTIMIZE BY GROUPING CLAIMS BY MULTIPLE ATTRIBUTES

1. The MiX platform's proprietary algorithm will group the claims on these attributes and determine optimal solutions (Network and OON combinations) by:

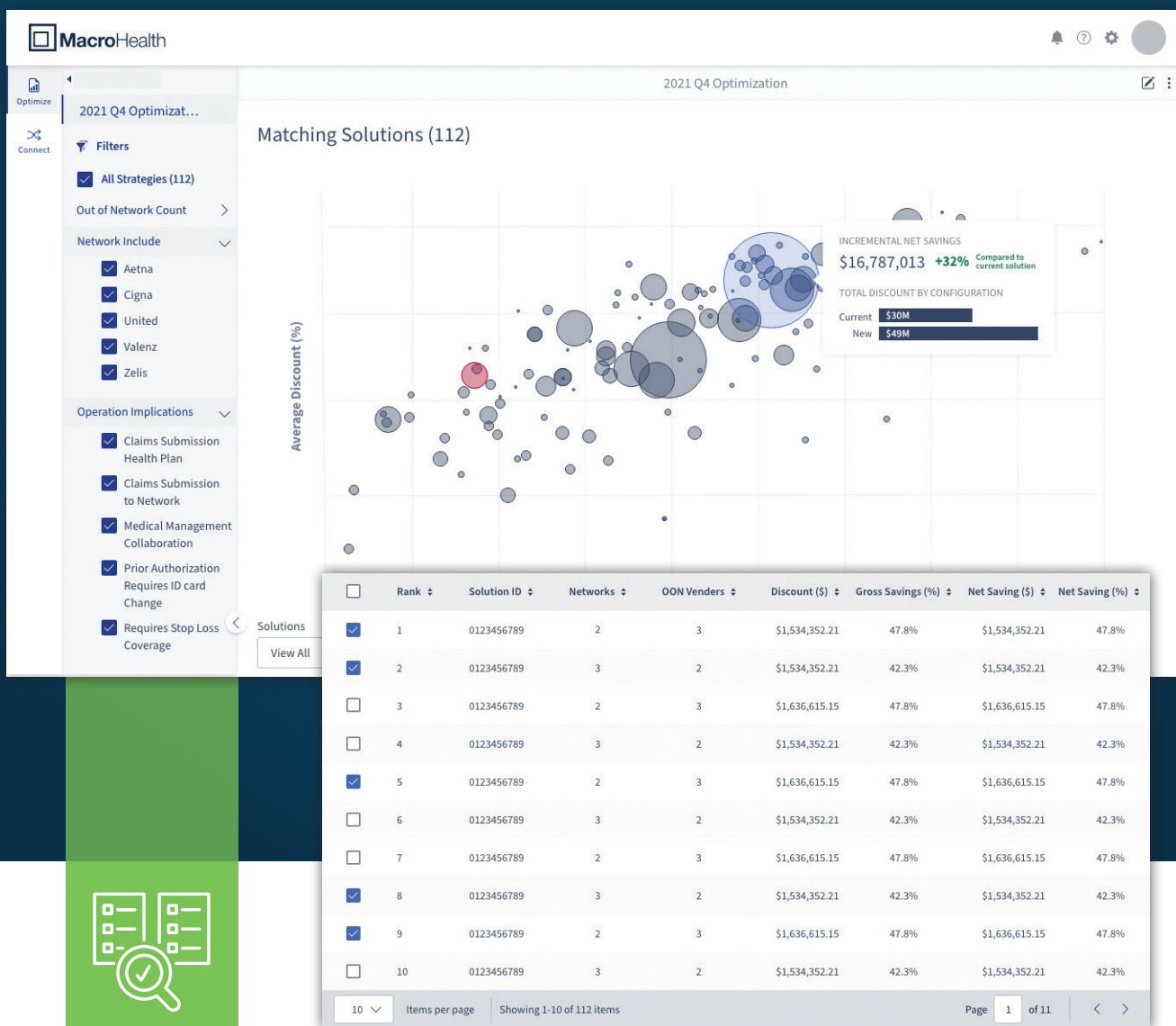
- Funding Type only
- Region only
- A combination of Funding Type and Region
- Neither Funding Type or Region



*Here's an example using Funding Type and Region:*

2. Apply business requirements to reduce the number of valid solutions.
3. Valid solutions are ranked based on the highest discount.





## COMPARE MULTIPLE NETWORK & OON COMBINATIONS

The insights identified through the MiX platform provide you with a clear picture of past and current healthcare purchasing performance coupled with an unbiased view of the provider networks and healthcare solutions providers that bring the most value and best fit the needs of your member population.

## DELIVERING VALUE TO YOU AND EACH OF YOUR MEMBERS

Payers that optimize and connect to networks through the MiX platform achieve an average savings reduction from billed charges of 47.6% and a 16% average reduction in annual healthcare spend overall.

*Over 2.8 million commercial members are currently served through our platform, speak to our industry experts today to learn how you can add yours into to the MiX!*

MacroHealth | USA  
5209 Lake Washington Blvd NE #100  
Kirkland, WA 98033

MacroHealth | Canada  
1177 W Hastings St 8th Floor  
Vancouver, BC V6E 4T5 Canada



**MacroHealth**

[info@macrohealth.com](mailto:info@macrohealth.com) | **Email**  
[MacroHealth.com](http://MacroHealth.com) | **Website**